



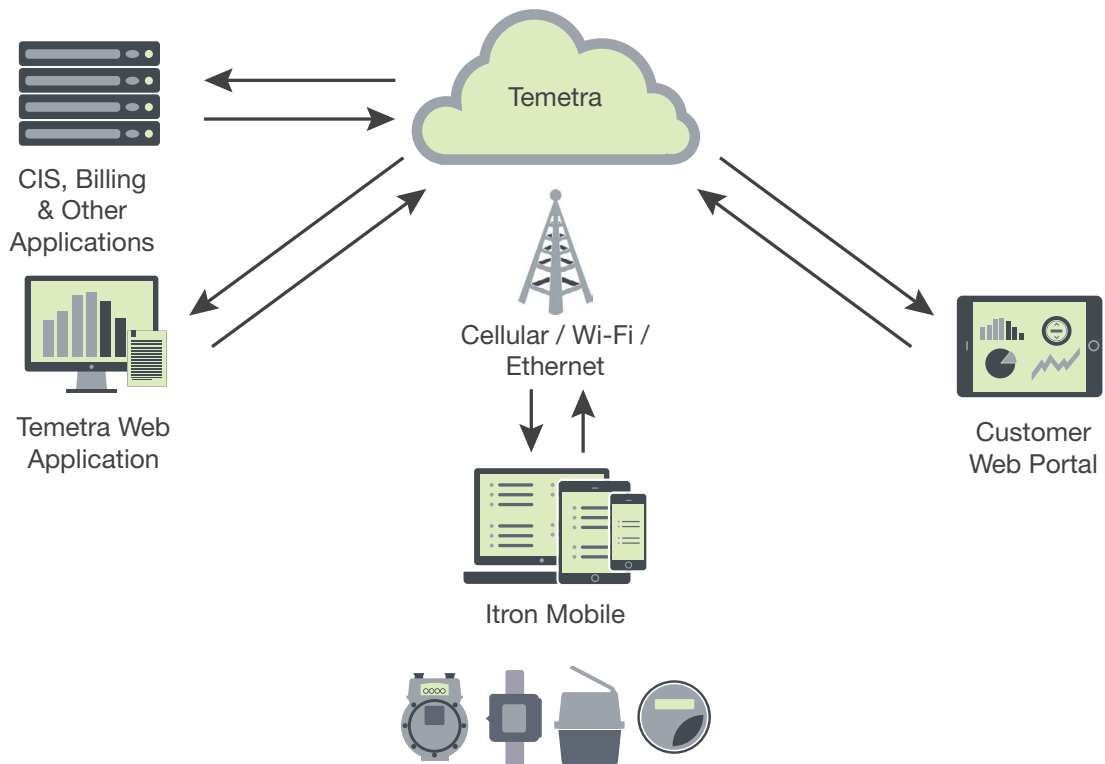
Technical Guide WIT9.2

# Temetra<sup>®</sup>

Cloud-based Mobile Meter Data Collection and Management



Temetra is Itron's next-generation mobile meter data collection and management solution, providing you with new ways to optimize your operations and improve customer engagement. With full Itron Mobile integration, Temetra provides you with a complete, cutting-edge mobile data collection package in the cloud.



Temetra with Itron Mobile in a Typical Mobile Collection Deployment

## STRENGTHS:

- » Automate meter reading using drive-by or walk-by and Itron's advanced meters and endpoints
- » Collect visual reads, water probe reads and other valuable meter data
- » Improve meter reading efficiency with map-assisted meter reading on the mobile device
- » Collect and upload meter data in real time
- » Securely and easily access, store and manage data through the cloud
- » Quickly assign or reassign work based on meter and meter reader location via Temetra Geo-Routing
- » Increase customer satisfaction and engagement by providing access to meter history via the Customer Web Portal



*Itron Mobile Radio  
(actual size: 3.20" W x 5.66" L x 1.53" H)*



*Itron MC3 Radio  
(actual size: 13" W x 11.25" L x 2.75" H)*

## SAFE, ACCURATE & EFFICIENT

### Safety

Using drive-by data collection keeps your employees out of the weather and safer in the field. Hazard warnings from the data collector inform meter readers of potential dangers before approaching a meter.

### Accuracy

Automated data collection avoids mis-keyed reads, resulting in reduced billing errors. Read validation ensures meter reads are recorded accurately, and photo support helps address billing complaints.

### Efficiency

Quickly find customer and meter locations using integrated mapping with GPS support. Location-based route sequencing helps your meter readers work more efficiently.

## DATA STORAGE AND ACCESS IN THE CLOUD

### Real Time

Improve your operational efficiency by loading and unloading routes and photos remotely from the field. Data storage in the cloud allows employees in the field to upload their route data and receive new routes using internet connections including Wi-Fi and cellular.

### Secure

Rest easy knowing your utility's data is safe. All data is held on secure servers which meet the ISO 27001 information security standard.

### Accessible

Give users easy access to the information they need. Data is accessed through the Temetra Web Application, which can be configured with as many user profiles as there are departments at your utility.

### Affordable

Reduce costs associated with deploying and maintaining servers and software. While our industry-leading IT and security professionals maintain your servers, we will also continue to provide you with regular software updates transparently through the cloud. This reduces IT costs and downtime associated with buying and setting up new hardware and installing software updates.

## INTUITIVELY ASSIGN OR REASSIGN ROUTES USING GEO-ROUTING

Temetra Geo-Routing enables the simple creation of more efficient routes. Meter coordinates are stored in the Temetra cloud environment, allowing routes to be created and assigned based on the locations of both meters and meter readers.



### **CUSTOMER WEB PORTAL**

Improve customer satisfaction and awareness by enabling customer cost-savings. The Customer Web Portal allows you to proactively inform your customers of abnormal usage, therefore reducing billing complaints. In addition, customers can monitor their usage over time, allowing them to take steps to reduce their monthly bill.