

Gillies Ductile Iron Fittings Range

Technical Guide W3.1

The Gillies range of Ductile Iron fittings are manufactured to the highest industry standards and have a proven performance record in New Zealand. This range includes tees, bends, and other pipe fittings compliant with AS/NZS 2280 where applicable.



04.23 | W3.1 GILLIES DUCTILE IRON FITTINGS RANGE

Applications

Potable water and wastewater pipelines
 Water supply maintenance
 Pump stations
 Water reticulation and irrigation

Product Attributes

High-strength Ductile Iron construction
 Plascoat coating for corrosion prevention
 Flanged fittings rated to PN16
 USJ fittings rated to PN35

Approvals/Standards

Approved to AS/NZ 2280:2014
 Coating complies with AS/NZS 4158 and AS/NZS 4020 (WSAA Product Appraisal 05/12)

Quality

ISO 9001 Quality Management Systems
 ISO45001 Health & Safety

We are the supply partner of choice for New Zealand's civil construction industry, specialising in water and infrastructure based solutions.

Gillies proven-performance Ductile Iron fittings are designed to work in conjunction with common pipe materials and dimensions with flanged, socket and spigot fitting configurations. Custom made spool pieces are available to order.

Applications

- Potable water and wastewater pipelines
- Water supply maintenance
- Pump stations
- Subdivisions
- Water reticulation and irrigation

Product Attributes

- Sizes up to DN600, including bends, tees, flanges, flange adaptors and tapers.
- USJ fittings are suitable for operating pressure up to 35 bar.
- Flanged fittings are suitable for operating pressure up to 16 bar as standard. Higher pressures available.
- Flanged fittings are drilled to Table D as standard, with other flange drillings available upon request.
- Maximum deflection in the socket is 3.5°.
- Fittings are supplied with Plascoat PPA 571 coating for superior protection.
- Suitable for buried and above ground applications.

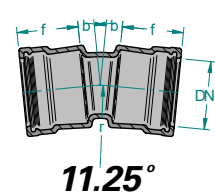
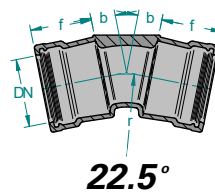
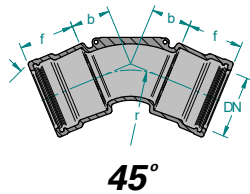
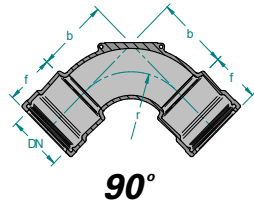
Product Range

- All fittings are designed and manufactured to AS/NZS 2280:2014 with dimensional requirements to the references listed in Appendix H, or to the dimensional requirements of the customer as provided for in the Standard – providing all other requirements of the Standard are met.
- The Gillies DI Fittings range includes:
 - Ductile Iron Bends- Socket, Flanged
 - Ductile Iron Tees- Spigot, Socket, Flanged
 - Hydrant Tees
 - Hydrant Risers
 - Pipe Spools
 - Tapers
 - Flange Adaptors
 - Blank and Tapped Flanges

Laboratory Testing

- Gillies registered on-site testing laboratory is utilised to batch test and control all certified product.

Ductile Iron Socket Bends SOC/SOC



Series 2

TABLE 1 90° Bends

Code	DN (mm)	r	b	f
BAQ10090-C	100	75	90	112
BAQ15090-C	150	120	132	121
BAQ20090-C	200	203	220	134
BAQ25090-C	250	254	275	155
BAQ30090-C	300	305	325	170
BAQ37590-C	375	381	405	170
BAQ45090-C	450	457	480	170

TABLE 2 45° Bends

Code	DN (mm)	r	b	f
BAQ10045-C	100	75	45.5	112
BAQ15045-C	150	120	62	121
BAQ20045-C	200	203	100	134
BAQ25045-C	250	254	125	155
BAQ30045-C	300	305	145	170
BAQ37545-C	375	381	185	170
BAQ45045-C	450	457	215	170

TABLE 3 22.5° Bends

Code	DN (mm)	r	b	f
BAQ10022-C	100	75	29	112
BAQ15022-C	150	120	36	121
BAQ20022-C	200	203	55	134
BAQ25022-C	250	254	70	155
BAQ30022-C	300	305	80	170
BAQ37522-C	375	381	100	170
BAQ45022-C	450	457	115	170

TABLE 4 11.25° Bends

Code	DN (mm)	r	b	f
BAQ10011-C	100	75	22	112
BAQ15011-C	150	120	24	121
BAQ20011-C	200	203	35	134
BAQ25011-C	250	254	45	155
BAQ30011-C	300	305	50	170
BAQ37511-C	375	381	65	170
BAQ45011-C	450	457	70	170

Series 1

TABLE 5 90° Bends

Code	DN (mm)	r	b	f
BZ10090-C	100	75	90	112
BZ15090-C	150	120	132	121
BZ20090-C	200	203	220	134
BZ25090-C	250	254	275	155
BZ30090-C	300	305	325	170
BZ37590-C	375	381	405	170
BZ45090-C	450	457	480	170

TABLE 6 45° Bends

Code	DN (mm)	r	b	f
BZ10045-C	100	75	45.5	112
BZ15045-C	150	120	62	121
BZ20045-C	200	203	100	134
BZ25045-C	250	254	125	155
BZ30045-C	300	305	145	170
BZ37545-C	375	381	185	170
BZ45045-C	450	457	215	170

TABLE 7 22.5° Bends

Code	DN (mm)	r	b	f
BZ10022-C	100	75	29	112
BZ15022-C	150	120	36	121
BZ20022-C	200	203	55	134
BZ25022-C	250	254	70	155
BZ30022-C	300	305	80	170
BZ37522-C	375	381	100	170
BZ45022-C	450	457	115	170

TABLE 8 11.25° Bends

Code	DN (mm)	r	b	f
BZ10011-C	100	75	22	112
BZ15011-C	150	120	24	121
BZ20011-C	200	203	35	134
BZ25011-C	250	254	45	155
BZ30011-C	300	305	50	170
BZ37511-C	375	381	65	170
BZ45011-C	450	457	70	170

Ductile Iron Flanged Bends FLG/FLG

TABLE 9 90° Bends

Code	DN (mm)	b	r
BDF08090-C	80	152	101
BDF10090-C	100	241	152
BDF15090-C	150	279	190
BDF20090-C	200	305	203
BDF25090-C	250	356	254
BDF30090-C	300	406	305
BDF37590-C	375	495	381
BDF45090-C	450	457	457
BDF60090-C	600	737	610

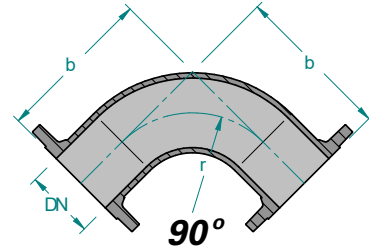


TABLE 10 45° Bends

Code	DN (mm)	b	r
BDF08045-C	80	*	*
BDF10045-C	100	152	152
BDF15045-C	150	190	190
BDF20045-C	200	203	203
BDF25045-C	250	254	254
BDF30045-C	300	305	305
BDF37545-C	375	381	381
BDF45045-C	450	457	457
BDF60045-C	600	610	610

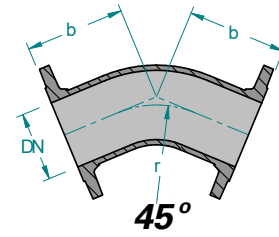


TABLE 11 22.5° Bends

Code	DN (mm)	b	r
BDF08022-C	80	*	*
BDF10022-C	100	152	152
BDF15022-C	150	190	190
BDF20022-C	200	203	203
BDF25022-C	250	254	254
BDF30022-C	300	305	305
BDF37522-C	375	381	381
BDF45022-C	450	457	457
BDF60022-C	600	610	610

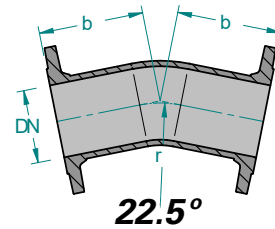
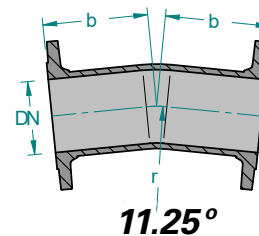


TABLE 12 11.25° Bends

Code	DN (mm)	b	r
BDF08011-C	80	*	*
BDF10011-C	100	152	152
BDF15011-C	150	190	190
BDF20011-C	200	203	203
BDF25011-C	250	254	254
BDF30011-C	300	305	305
BDF37511-C	375	381	381
BDF45011-C	450	457	457
BDF60011-C	600	610	610



Note:

* Dimensions are available upon request

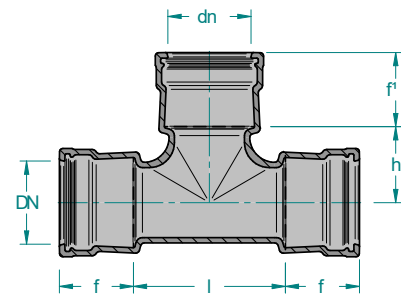
Ductile Iron Socket Tee SOC/SOC/SOC

TABLE 13 Tee SOC-SOC-SOC - Series 2

Code	DN (mm)	dn (mm)	l	h	f	f1
TAQ100-C	100	100	150	75	112	112
TAQ150-C	150	150	236	118	121	121
TAQ200-C	200	200	340	170	134	134

TABLE 14 Tee SOC-SOC-SOC - Series 1

Code	DN (mm)	dn (mm)	l	h	f	f1
TZ100-C	100	100	150	75	112	112
TZ150-C	150	150	290	145	95	95
TZ200-C	200	200	340	170	148	148



Tee SOC/SOC/SOC

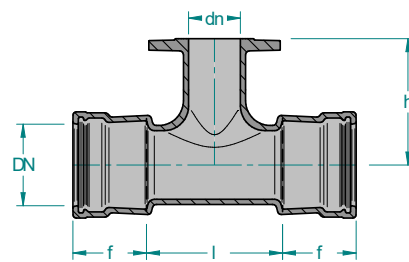
Ductile Iron Socket Tee Branch Flanged SOC/SOC/FLG

TABLE 15 Tee SOC-SOC-FLG - Series 2

Code	DN (mm)	dn (mm)	l	h	f
TBFMWAQ100-C	100	100	159	165	112
TBFMWAQ100150-C	150	100	186	190	121
TBFMWAQ150-C	150	150	236	210	121
TBFAQ100200-C	200	100	230	250	134
TBFAQ150200-C	200	150	290	275	134
TBFMWAQ200-C	200	200	340	275	134

TABLE 16 Tee SOC-SOC-FLG - Series 1

Code	DN (mm)	dn (mm)	l	h	f
TBFMWZ100-C	100	100	159	165	112
TBFMWZ100150-C	150	100	186	190	121
TBFMWZ150-C	150	150	236	210	121
TBFMWZ100200-C	200	100	230	250	134
TBFMWZ150200-C	200	150	290	275	134
TBFMWZ200-C	200	200	340	275	134

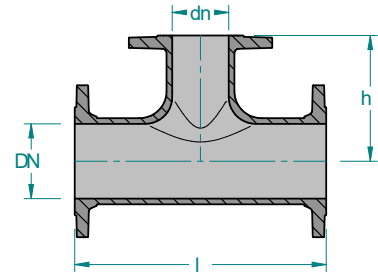


Tee SOC/SOC/FLG

Ductile Iron Flanged Tee FLG/FLG/FLG

TABLE 17 Tee FLG/FLG/FLG

Code	DN (mm)	dn (mm)	h	l
TAF080-C	80	80	178	356
TAF100-C	100	100	178	356
TAF100150-C	150	100	203	406
TAF150-C	150	150	203	406
TAF100200-C	200	100	241	484
TAF150200-C	200	150	241	484
TAF200-C	200	200	241	484
TAF100250-C	100	250	267	534
TAF150250-C	250	150	267	534
TAF200250-C	250	200	267	534
TAF250-C	250	250	267	534
TAF100300-C	300	100	305	610
TAF150300-C	300	150	305	610
TAF200300-C	300	200	305	610
TAF250300-C	300	250	305	610
TAF300-C	300	300	305	610
TAF100375-C	375	100	356	738
TAF200375-C	375	200	356	738
TAF375-C	375	375	356	738
TAF450-C	450	450	406	814

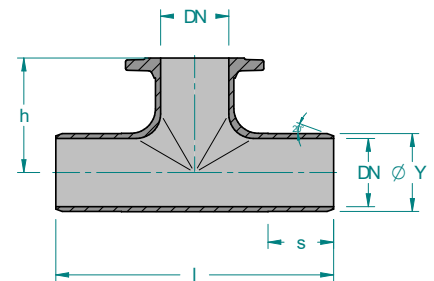


Tee FLG/FLG/FLG

Ductile Iron Plain End Tee SPIG/SPIG/FLG

TABLE 18 Plain end Tee SPIG/SPIG/FLG

Code	DN (mm)	dn (mm)	l	h
TBF100-C	100	100	432	178
TBF100150-C	150	100	432	203
TBF150-C	150	150	432	203
TBF200-C	200	200	534	241

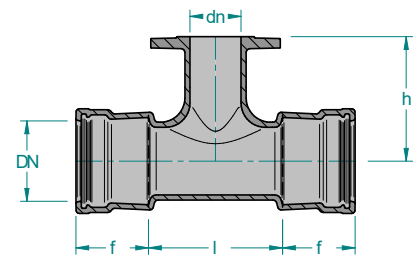


Tee SPIG/SPIG/FLG

Ductile Iron Hydrant Tee Socket Branch Flanged SOC/SOC/FLG

TABLE 19 Tee SOC-SOC-FLG - Series 2

Code	DN (mm)	dn (mm)	l	h	f
THAQ100-C	100	80	144	155	112
THAQ150-C	150	80	140	185	121
THAQ200-C	200	80	210	250	120
THAQ250-C	250	80	220	280	160
THAQ300-C	300	80	220	310	170.5



Tee SOC/SOC/FLG

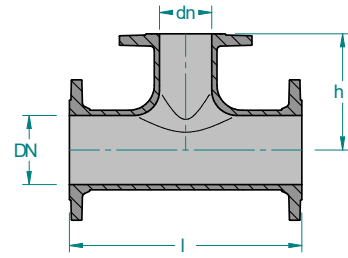
TABLE 20 Tee SOC-SOC-FLG - Series 1

Code	DN (mm)	dn (mm)	l	h	f
THZ100-C	100	80	144	155	112
THZ150-C	150	80	140	185	121
THZ200-C	200	80	210	250	120
THZ250-C	250	80	220	280	160
THZ300-C	300	80	220	310	170.5

Ductile Iron Flanged Hydrant Tee FLG/FLG/FLG

TABLE 21 Flanged Hydrant Tee FLG/FLG/FLG

Code	DN (mm)	dn(mm)	h	l
THAF100-C	100	80	178	356
THAF150-C	150	80	203	406
THAF200-C	200	80	241	484
THAF250-C	250	80	267	534
THAF300-C	300	80	305	610
THAF375	375	80	356	738



Tee FLG/FLG/FLG

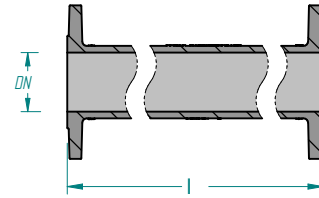
Ductile Iron Hydrant Riser

TABLE 22 Hydrant Riser

Code	DN(mm)	L
HR100-C	80	100
HR150-C	80	150
HR225-C	80	225
HR300-C	80 <td 300	
HR375-C	80	375
HR450-C	80	450
HR600-C	80	600

TABLE 23 Hydrant Riser Tapped 2" BSP

Code	DN(mm)	L
HR150T-C	80	150
HR225T-C	80	225
HR300T-C	80	300
HR375T-C	80	375
HR450T-C	80	450
HR600T-C	80	600



Hydrant Risers

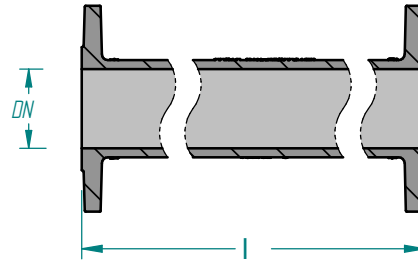
Ductile Iron Pipe Spool Double Flanged FLG/FLG

TABLE 24 Pipe Spool Double Flanged FLG/FLG

Code	DN (mm)	L
PSDF080400-C	80	400
PSDF100100-C	100	100
PSDF100150-C	100	150
PSDF100200-C	100	200
PSDF100225-C	100	225
PSDF100300-C	100	300
PSDF100400-C	100	400
PSDF100450-C	100	450
PSDF100500-C	100	500
PSDF100600-C	100	600
PSDF1001000-C	100	1000
PSDF1001200-C	100	1200
PSDF150100-C	150	100
PSDF150150-C	150	150
PSDF150225-C	150	225
PSDF150300-C	150	300
PSDF150400-C	150	400
PSDF150450-C	150	450
PSDF150500-C	150	500
PSDF150600-C	150	600
PSDF1501000-C	150	1000
PSDF1501200-C	150	1200
PSDF200150-C	200	150
PSDF200300-C	200	300
PSDF200400-C	200	400
PSDF200500-C	200	500
PSDF200600-C	200	600
PSDF200850-C	200	850
PSDF2001000-C	200	1000
PSDF2001200-C	200	1200
PSDF250300-C	250	300
PSDF250500-C	250	500
PSDF2501000-C	250	1000
PSDF300300-C	300	300
PSDF300500-C	300	500
PSDF300775-C	300	775
PSDF3001000-C	300	1000
PSDF3001200-C	300	1200

TABLE 25 Tapped Pipe Spool. Midpoint 50mm BSP

Code	DN (mm)	L
PSDF100200T50	100	200
PSDF150200T50	150	200
PSDF200200T50	200	200



Spool Pieces

TABLE 26 Pipe Spool a midpoint Puddle Flange

Code	DN (mm)	L
PSDF100600PF-C	100	600
PSDF1001000PF-C	100	1000
PSDF1001200PF-C	100	1200
PSDF150600PF-C	150	600
PSDF150700PF-C	150	700
PSDF150800PF-C	150	800
PSDF1501000PF-C	150	1000
PSDF200600PF-C	200	600
PSDF2001000PF-C	200	1000
PSDF2501000PF-C	250	800
PSDF300900PF-C	300	900
PSDF375500PF-C	375	500

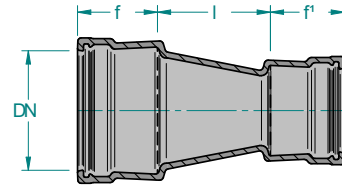
Ductile Iron Socket Taper SOC/SOC

TABLE 27 Reducer SOC/SOC

Code	DN (mm)	dn (mm)	l	f	f1
RZ200100-C	200	100	295	134	112

TABLE 28 Reducer SOC/SOC

Code	DN (mm)	dn (mm)	l	f	f1
RAQ150100-C	150	100	170	121	112
RAQ200100-C	200	100	295	134	112
RAQ200150-C	200	150	170	134	121



Tapers SOC/SOC

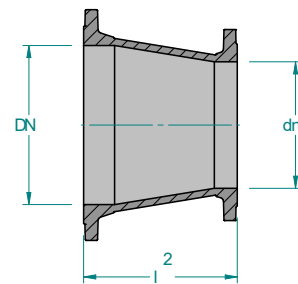
Ductile Iron Flanged Taper FLG/FLG

TABLE 29 Reducer FLG/FLG

Code	DN (mm)	dn (mm)	L
RDF080050-C	80	50	*
RDF100050-C	100	50	168
RDF100080-C	100	80	165
RDF125100-C	125	100	*
RDF150080-C	150	80	298
RDF150100-C	150	100	235
RDF200080-C	200	80	*
RDF200100-C	200	100	368
RDF200150-C	200	150	248
RDF250100-C	250	100	495
RDF250150-C	250	150	375
RDF250200-C	250	200	254
RDF250225-C	250	225	190
RDF300100-C	300	100	629
RDF300200-C	300	200	387
RDF300250-C	300	250	457
RDF375200-C	375	200	*
RDF375250-C	375	250	*
RDF375300-C	375	300	337
RDF450300-C	450	300	540

Note:

* Dimensions are available upon request

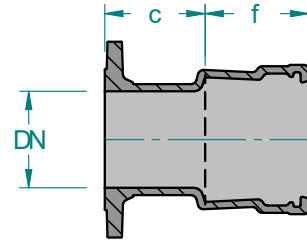


Tapers FLG/FLG

Ductile Iron Flanged Connectors FLG/SOC

TABLE 30 Connectors FLG/SOC - Series 2

Code	DN (mm)	c	f
FAAQ100-C	100	60	112
FAAQ150-C	150	68	121
FAAQ200-C	200	120	134
FAAQ250-C	250	160	155
FAAQ300-C	300	170	170.5
FAAQ375-C	375	190	170.5
FAAQ450-C	450	200	170.5



Connectors FLG/SOC

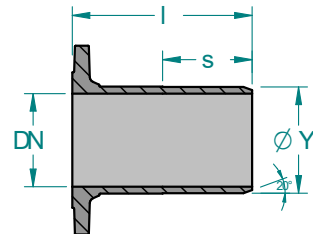
TABLE 31 Connectors FLG/SOC - Series 1

Code	DN (mm)	c	f
FAZ100-C	100	60	112
FAZ150-C	150	68	121
FAZ200-C	200	120	134
FAZ250-C	250	160	155
FAZ300-C	300	170	170.5
FAZ375-C	375	190	170.5
FAZ450-C	450	200	170.5

Ductile Iron Flanged Connectors FLG/SPIG

TABLE 32 Connectors FLG/SPIG

Code	DN (mm)	L1
FAPE100-C	100	205
FAPE150-C	150	205
FAPE200-C	200	230
FAPE250-C	250	230
FAPE300-C	300	255
FAPE375-C	375	280
FAPE450-C	450	280



Connectors FLG/SPIG

Ductile Iron Blank Flanges

TABLE 33 Blank Flanges

Code	DN (mm)
BF050-C	50
BF080-C	80
BF100-C	100
BF150-C	150
BF200-C	200
BF250-C	250
BF300-C	300
BF375-C	375

TABLE 34 Blank Flanges Table E

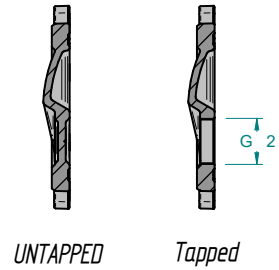
Code	DN (mm)
BF100-CE	100
BF150-CE	150
BF200-CE	200

TABLE 35 Blank Flanges Tapped 2" BSP

Code	DN (mm)
BF050T-C	50
BF080T-C	80
BF100T-C	100
BF150T-C	150
BF200T-C	200
BF250T-C	250
BF300T-C	300
BF375T-C	375
BF400T-C	400
BF450T-C	450

TABLE 36 Blank Flanges Tapped 2" BSP Table E

Code	DN (mm)
BF100T-CE	100
BF150T-CE	150
BF200T-CE	200



Blank Flanges

Branches Nationwide *Support Office & Technical Services 0800 93 7473*

Disclaimer: While every effort has been made to ensure that the information in this document is correct and accurate, users of Hynds product or information within this document must make their own assessment of suitability for their particular application. Product dimensions are nominal only, and should be verified if critical to a particular installation. No warranty is either expressed, implied, or statutory made by Hynds unless expressly stated in any sale and purchase agreement entered into between Hynds and the user.