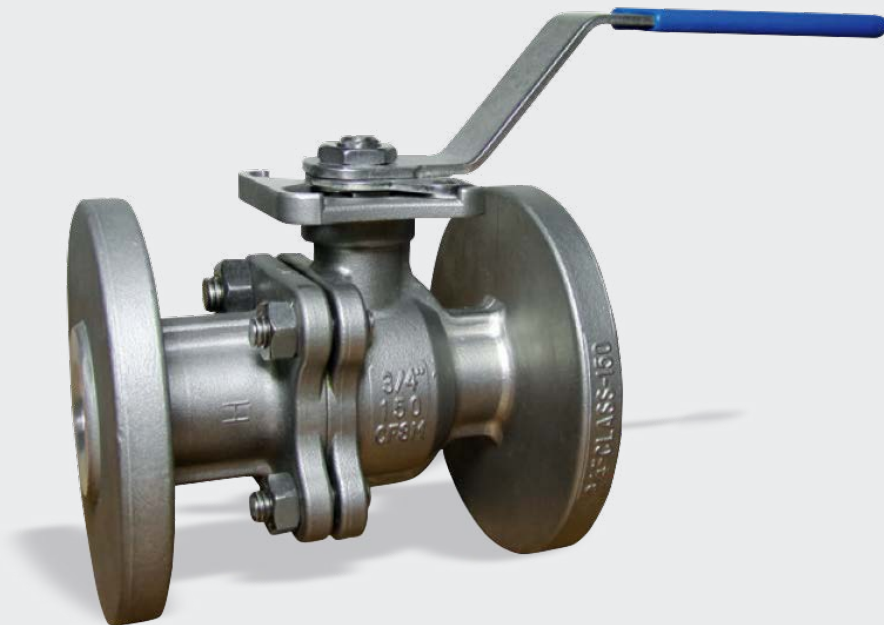


Two Piece, Full Bore Flanged Ball Valve

Technical Guide W4.15

Flanged 316 stainless steel Ball Valve



11.22 | W4.15 FLANGED BALL VALVE

Applications

Water treatment

Chemical

Chilled water

Product Attributes

Direct actuator mount

Lockable handle

Blow out proof stem

316SS / CF8M construction

Quality

ISO 9001:2008 Quality

Management Standard

We are the supply partner of choice for New Zealand's civil construction industry, specialising in water and infrastructure based solutions.

HYNDSwater

Two piece direct mount flanged ball valve DN 65 - 150

Features

- SS316 body, cap and ball
- Full bore
- Solid ball
- Internal entry blow-out proof stem
- Lever operated
- Direct mounting pad ISO 5211
- Anti-static device
- Flange pattern as required
- Fire-safe approved on request
- VEE port available on request



FIG. 1

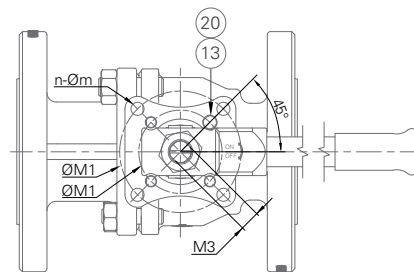


FIG. 2

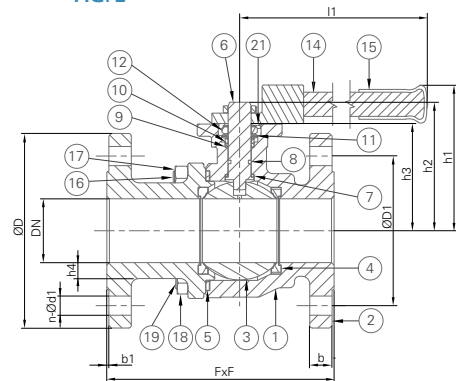


FIG. 3

TABLE 1

NO.	DESCRIPTION	MATERIAL
1	Body	CF8M
2	End Cap	CF8M
3	Ball	CF8M
4	Seat	PTFE
5	Joint Gasket	PTFE
6	Stem	SS316
7	Thrust Washer	PTFE
8	O-Ring	Viton
9	Stem Packing	PTFE
10	Stem Ring	SS304
11	Belleville Washer	SS304
12	Stem Nut	SS304
13	Stopper	SS304
14	Bar Handle	SS304
15	Plastic Sleeve	Plastic
16	Nut	SS304
17	Stud Bolt	SS304
18	Nut	SS304
19	Stud Bolt	SS304
20	Stopper Pin	SS304
21	Lock Washer	SS304

TABLE 2

DN	NPS	FxF	b	b1	ØD	ØD1	n-Ød1	h1	h2	h3	l1	ØM1	n-Øm	M3	Torque (N.m)	Weight (Kg)
65	2 1/2"	190	20.8	1.6	178	139.5	4-19	156	137	119	278	70/102	4-9/11	17	37	15.9
80	3"	203	22.3	1.6	191	152.5	4-19	167	148	130	278	70/102	4-9/11	17	61	20.3
100	4"	230	22.3	1.6	229	190.5	8-19	182	164	145	378	70/102	4-9/11	17	96	30
125	5"	325	22.3	1.6	255	215.9	8-22.5	225	202	159	415	102/125	4-12/14	27	157	48.4
150	6"	350	23.9	1.6	280	241.3	8-22.5	240	221	175	415	102/125	4-12/14	27	206	64.2

Branches Nationwide Support Office & Technical Services 0800 93 7473

Disclaimer: While every effort has been made to ensure that the information in this document is correct and accurate, users of Hynds product or information within this document must make their own assessment of suitability for their particular application. Product dimensions are nominal only, and should be verified if critical to a particular installation. No warranty is either expressed, implied, or statutory made by Hynds unless expressly stated in any sale and purchase agreement entered into between Hynds and the user.