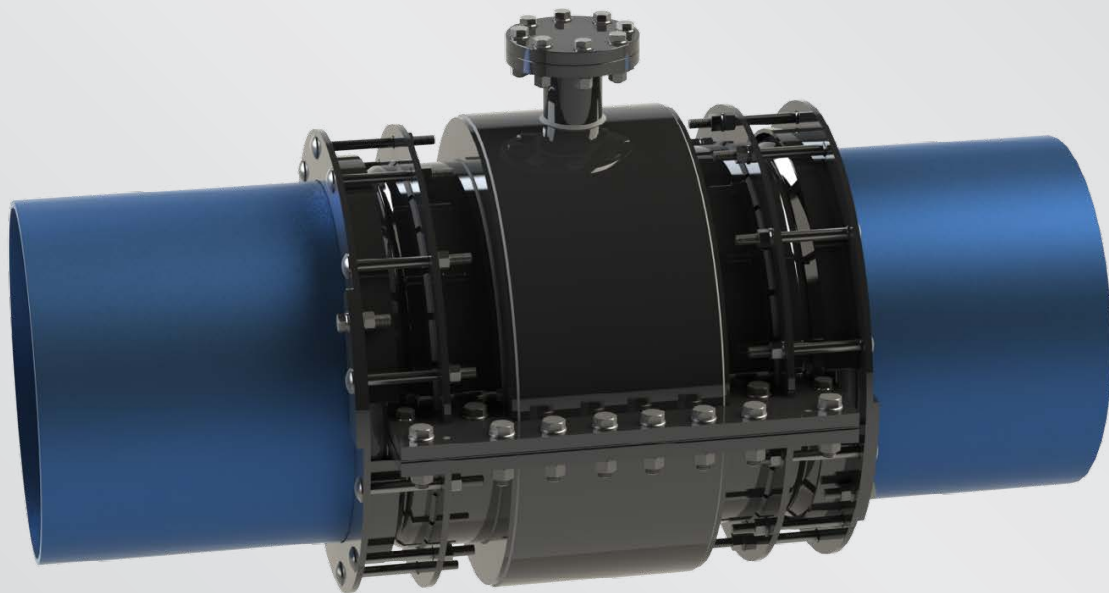


Duo-Fit Repair Fitting

Technical Guide W5.8

Two piece fittings for collar repair and tapping, without pipeline shutdown.



06.22 | W5.8 DUOFIT

Applications

Leak repair on sockets, collars, sleeves, gibaults, or previous attempts at repair

Suitable for potable water, gas, industrial applications

Tapping

Product Attributes

No service interruptions

Permanent repair solution

No pipe cutting required so no need to empty the pipeline

No specialist tools required

Available for high pressure applications, over 100 bar

Quality

ISO9001: 2015 Quality Management System

We are the supply partner of choice for New Zealand's civil construction industry, specialising in water and infrastructure based solutions.

Duo-Fit repair couplers are manufactured and supplied in two pieces with heavy duty seals, allowing for a “wrap around” repair and no pipe shut down.

Because of the specialised cavity design, the Duo-Fit is a popular repair option for leaking sockets & gibaults when pipeline shut down is not practical.

Duo-Fit couplings in two shells provide permanent repairing and tapping fittings without interruption of service of:

- Asbestos cement sockets
- Sockets or express couplings made of cast or ductile iron pipes
- PVC, GRP, Steel pipe sockets
- Repairs of already installed components like couplings, collars, fittings

Design

- Moulded barrel version Duo-Fit “Multisize” adjustable joint with independent flanges
- Tolerance range 30 mm (O.D. max.- O.D. min.)
- Length depending on bell shape
- Steel loose compressing flanges and steel socket S 235 JR
- Trunk seals - conical sealing gaskets made of elastomer polyvalent for water/gas (NBR); other materials (EPDM, NEOPRENE) on request.
- Side sealing gaskets made of elastomer polyvalent for water/gas (NBR); other materials (EPDM, NEOPRENE) on request
- Zinc coated screw bolts or grade A2 - AISI 304 stainless steel screw bolts also available
- Rilsan Nylon 11 anticorrosion coating

Materials

- Compression flanges and body: Steel S235JR
- Sealing gaskets: NBR. EPDM or Neoprene on request
- Bolts: options of Zinc coated, 304/316 stainless
- Anti-corrosion protection: Rilsan Nylon 11
- Multi-joint style gaskets used to accommodate variance in pipe OD's, 30mm tolerance



FIG. 1 Duo-Fit coupler installed on a concrete pipe

Applications

Permanent repair and tapping of:

- Asbestos cement sockets
- PVC sockets & solvent joint
- GRP connections
- Steel sockets & weld bands
- Repair to cover leaking pre-installed components, such as gibaults, couplers, fittings etc.

Advantages

- Limited excavations
- No service interruption
- No need to empty the pipeline
- No pipe-cutting
- Low cost installation, no specialist tools required
- Provides a definitive repair

Duo-Fit couplings are available in the following versions:

- HP version (High Pressure) for high pressure applications (over 100 bar)
- LT version (Light) dedicated to the outside diameter of the pipe which has to be repaired



FIG. 2

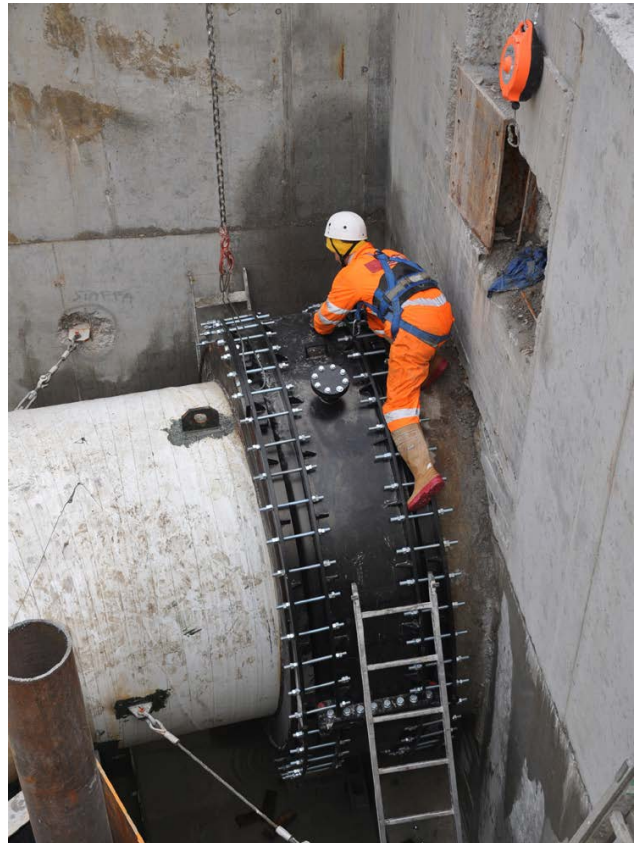


FIG. 3

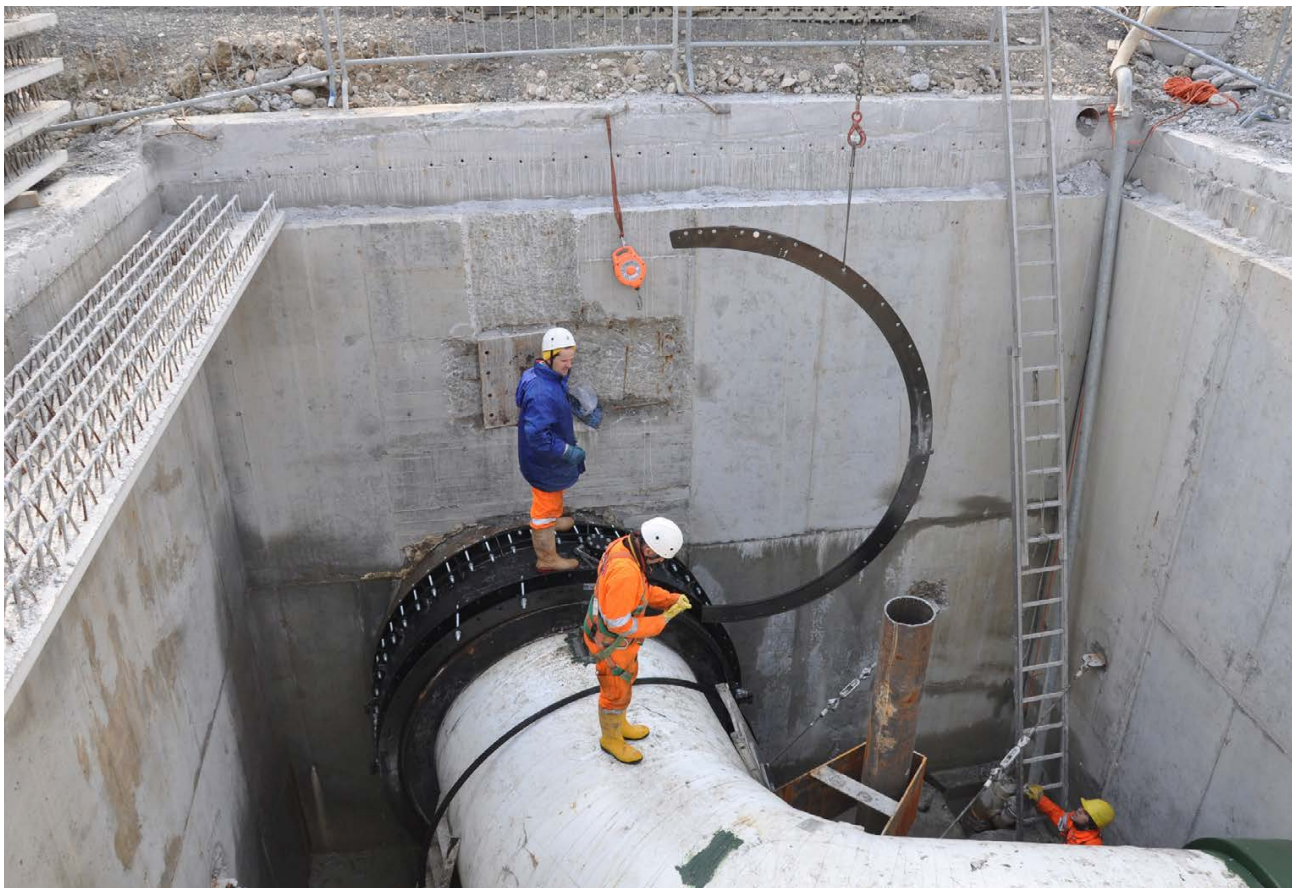


FIG. 4

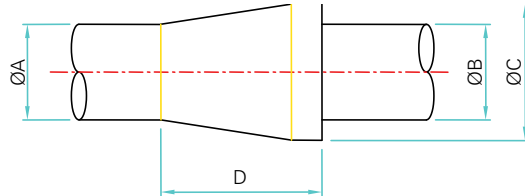
DUO-FIT QUOTE REQUEST

As the Nova Siria Duo-Fit is custom made to suit your application, we need some specific detail to provide you with the appropriate fitting. Please fill out the form below and return it to us for your quotation.

Please identify the type of repair and fill in the requested sizes

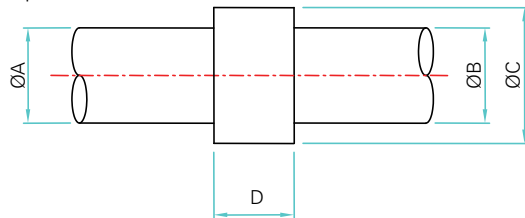
Date:

1) Socket to be encapsulated:



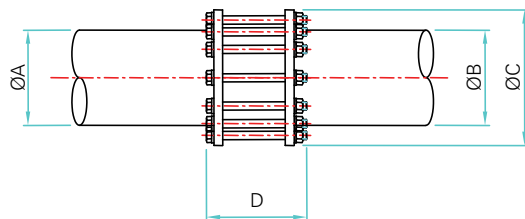
ØA	<input type="text"/>	mm
ØB	<input type="text"/>	mm
ØC	<input type="text"/>	mm
D	<input type="text"/>	mm

2) Object or clamp to be encapsulated:



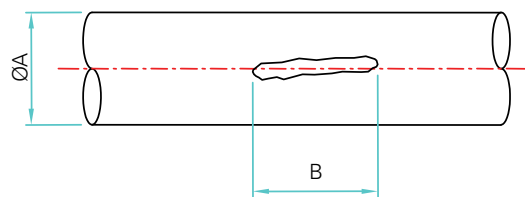
ØA	<input type="text"/>	mm
ØB	<input type="text"/>	mm
ØC	<input type="text"/>	mm
D	<input type="text"/>	mm

3) Coupling to be encapsulated:



ØA	<input type="text"/>	mm
ØB	<input type="text"/>	mm
ØC	<input type="text"/>	mm
D	<input type="text"/>	mm

4) Plain pipe with crack or hole:



ØA	<input type="text"/>	mm
B	<input type="text"/>	mm

Signature:

Name:

Company:

Branches Nationwide Support Office & Technical Services 0800 93 7473

Disclaimer: While every effort has been made to ensure that the information in this document is correct and accurate, users of Hynds product or information within this document must make their own assessment of suitability for their particular application. Product dimensions are nominal only, and should be verified if critical to a particular installation. No warranty is either expressed, implied, or statutory made by Hynds unless expressly stated in any sale and purchase agreement entered into between Hynds and the user.