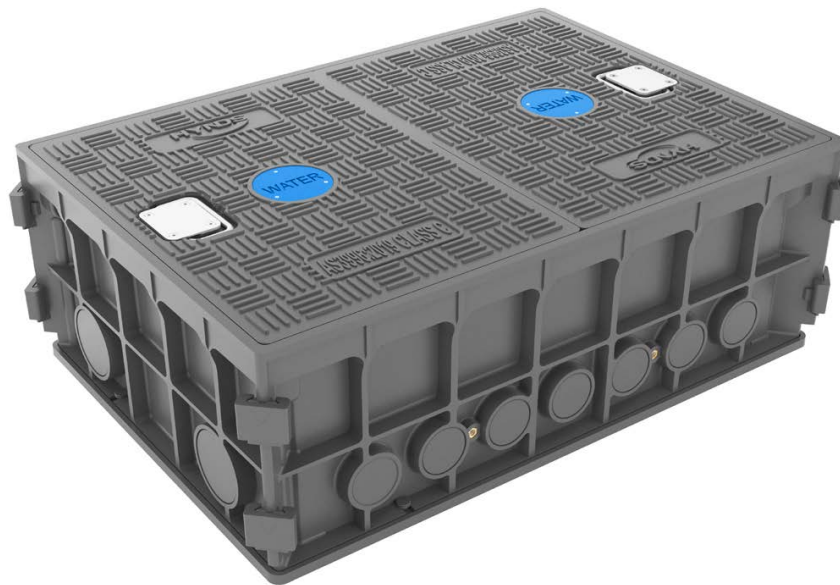


Water Meter Chamber

Technical Guide W10.1

A Sheet Moulded Composite Chamber rated to Class C150 (AS3996:2019) and designed for easy multiple water meter installations.



06.22 | W10.1 WATER METER CHAMBER

Applications

Water maintenance access point
Box for multiple water meter installations

Product Attributes

Designed to allow easy access for meter reading
Rigid material along with ribbed construction provides superior resistance to ground movement & side loading distortions
Ideal for remote monitoring of equipment

Approvals / Standards

Complies with Class C150 AS3996:2019
P5 rated for slip resistance to AS4586:2013

Quality

ISO9001:2015 Quality Management Systems
ISO14001:2015 Environmental Management Systems

We are the supply partner of choice for New Zealand's civil construction industry, specialising in water and infrastructure based solutions.



Specifically designed for ease of installation and access for meter reading.

Features

- Load Rated to Class C150 AS3996:2019
- Easy access self closing handle
- UV Stable Material
- Knock out soft spots - no drilling required for the pipe access
- Available with a 3, 4, 5, 6 way manifold
- Coloured puck for easy identification
- Composite structure allows radio signals to be read in AMR and AMI systems

Additional Options

- Optional Flat Pack for onsite assembly
- 25mm & 50mm BSP intakes

Testing

- Side load tested to ANSI / SCTE 77 2017 Tier 22
- Load tested to AS3996:2019 Class C150
- Slip Resistance tested to AS4586: 2013 Wet Pendulum achieving a P5 rating



FIG. 2 Chamber customised for 4 way manifold

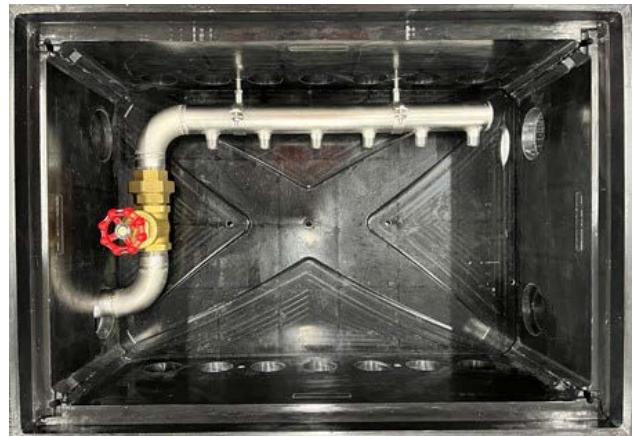


FIG. 3 Chamber customised for 6 way manifold

Technical specification 3-4 way box dimensions

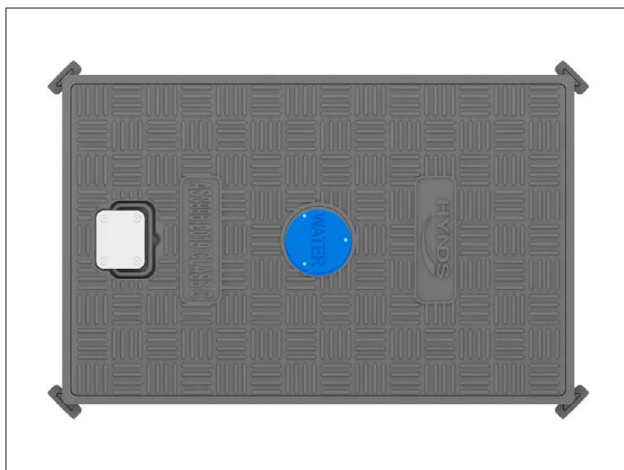
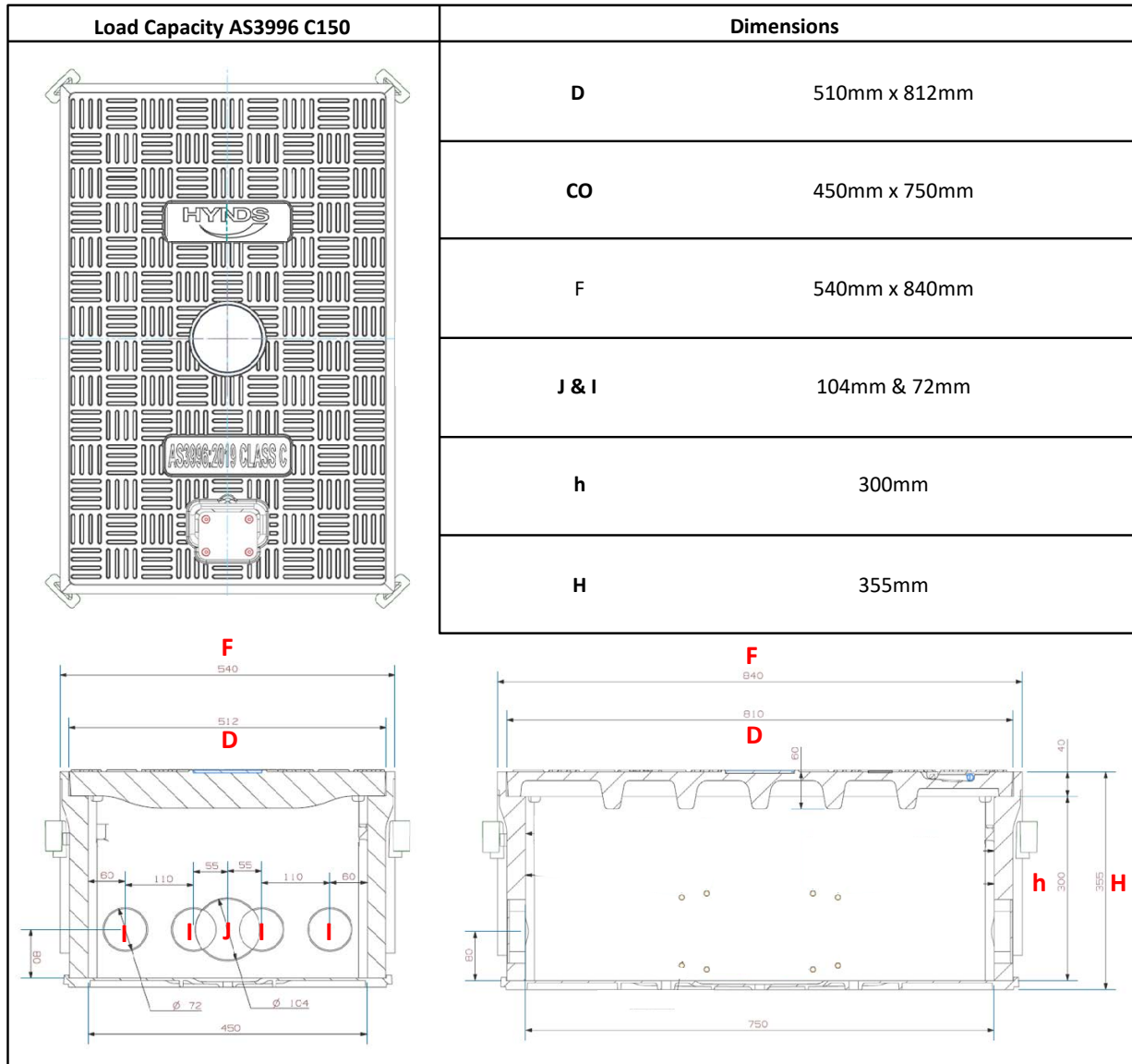


FIG. 4 Slip resistant easy lift lid

Technical specification 5-6 way box dimensions

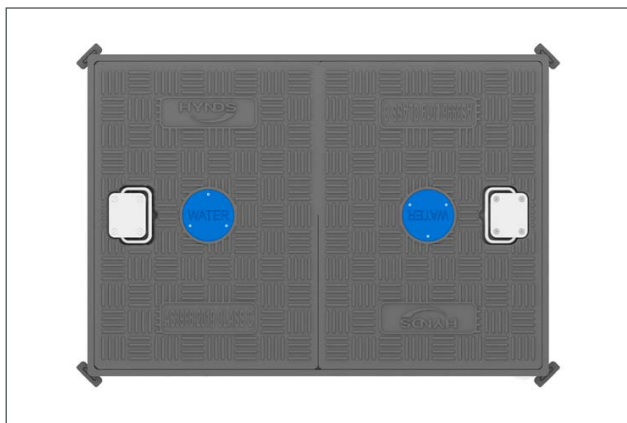
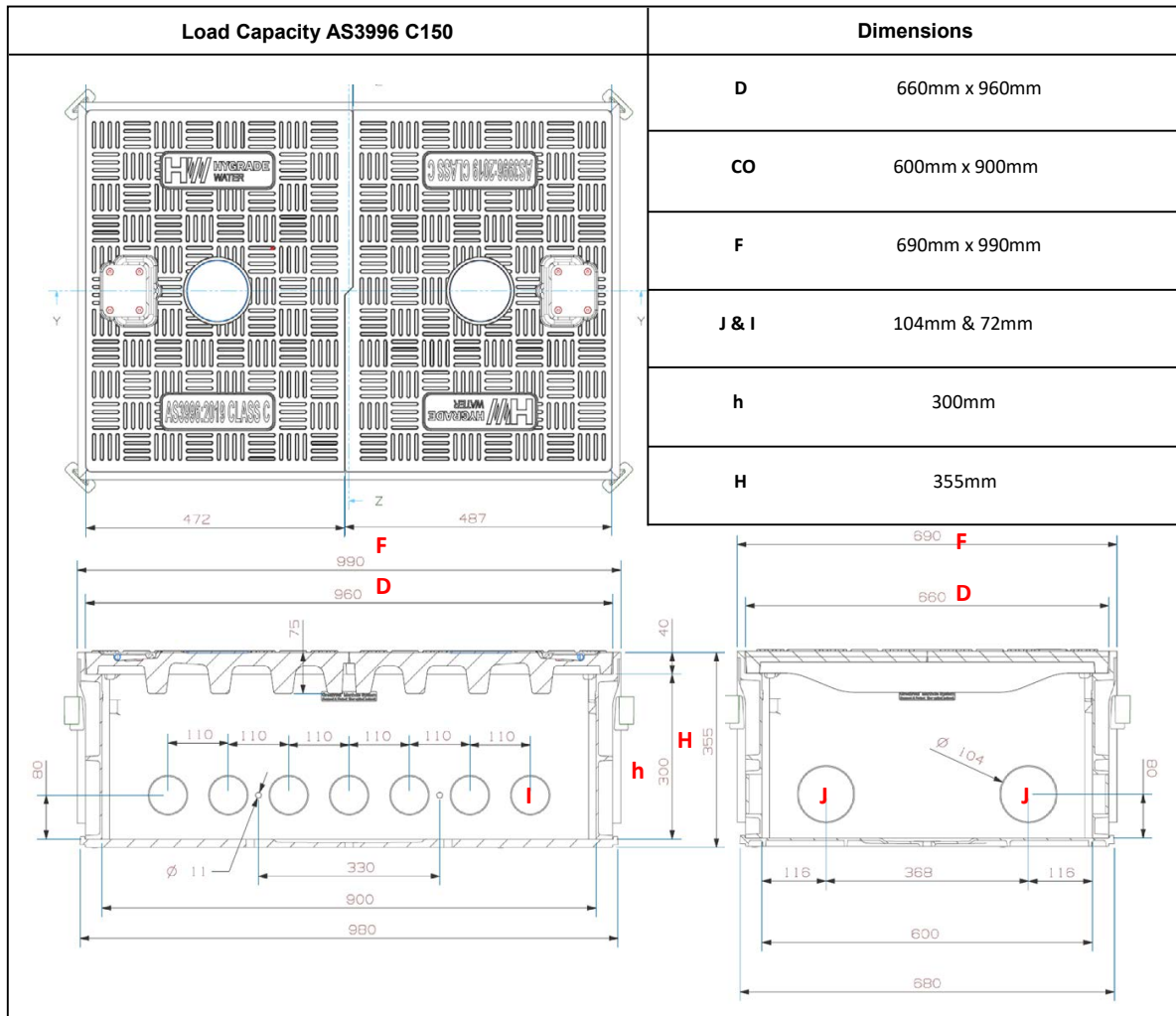


FIG. 5 Slip resistant easy lift lid

Code Information

WMBCOMP3-4 can be used with:

- WMM3WAY50MM
- WMM4WAY50MM

WMBCOMP5-6 can be used with

- WMM6WAY50MM

Branches Nationwide Support Office & Technical Services 0800 93 7473

Disclaimer: While every effort has been made to ensure that the information in this document is correct and accurate, users of Hynds product or information within this document must make their own assessment of suitability for their particular application. Product dimensions are nominal only, and should be verified if critical to a particular installation. No warranty is either expressed, implied, or statutory made by Hynds unless expressly stated in any sale and purchase agreement entered into between Hynds and the user.