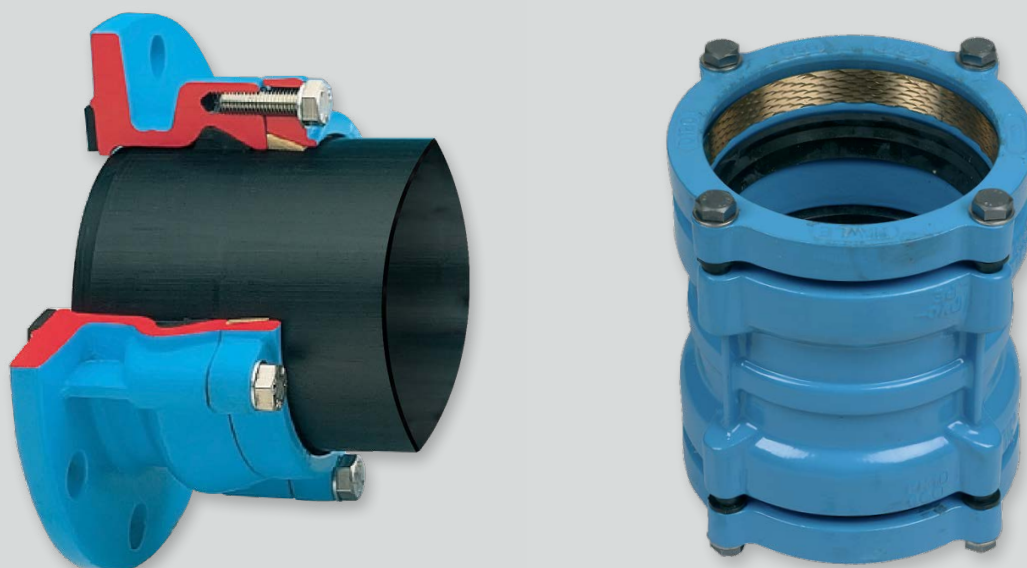


# Hawle System 2000 Couplers and Flange Adaptors

Technical Guide W5.9

Dedicated permanent connections designed for polyethylene pipe systems.  
Easy to fit with full restraint.



02.22 | W5.9 SYSTEM 2000 FLANGE COUPLERS AND ADAPTORS

## Applications

Potable water  
Irrigation  
Wastewater  
Specialist applications

## Product Attributes

Remove and refit without replacing any parts  
Total restraint  
Do not require support liners  
All weather installation

## Approvals/Standards

Flanges drilled to AS4087 Figure B5  
Quality  
ISO 9001:2008 Quality Management Systems

*We are the supply partner of choice for New Zealand's civil construction industry, specialising in water and infrastructure based solutions.*

# System 2000 Flange Adaptors and Couplers provide total restraint for PE pipelines up to PN 16

## Materials

The use of lip seals enables the pipe to be pushed in with minimal force. The flange to flange seal is incorporated onto the flange. The pipe restraining system is effective separated from the sealing system and is activated by tightening the locking ring.

Full assembly instructions and witness mark guide supplied with every fitting.

- Flange and locking ring: ductile iron, epoxy powder coated
- Lip seal: Elastomer, suitable for potable water
- Flat gasket: Elastomer
- Grip ring: Brass Ms 58 (up to DN 300 Rg7)
- Hexagonal bolts: A2 stainless steel
- Can be used on PVC pipes where the PVC OD matches the PE OD dimensions.
- For thin walled pipes and low internal pressure we recommend using a support liner

## Bolt and Seal Materials

1. Body
2. Lip seal of elastomer, suitable for potable water
3. Spacer bushes of PE
4. Grip ring Ms 58 (from DN 300 Rg7)
5. Lock ring of ductile iron EN-GJS-400-18 according to EN 1563 (GGG 400 - DIN 1693), epoxy powder coated
6. Bolts A 2 (stainless)

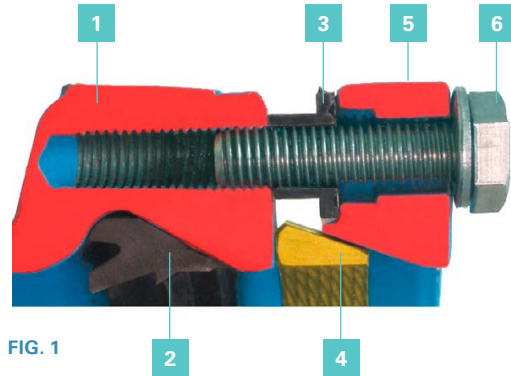


FIG. 1

## System 2000 Coupler

Connector for PE and PVC pipe

### Features

- Using a lip seal ring for sealing the pipe allows for easier insertion of the pipe into the System 2000 socket
- The pipe restraining system is required for pushing the pipe into the seal and chamfer with an appropriate tool
- For PE pipes with thin walls ( $\geq$  SDR 21) and low internal pressure we recommend using a support liner
- Suitable for PE pipes 80/100, EN 12201, DIN 8074
- For PVC pipes according to EN ISO 1452-2'

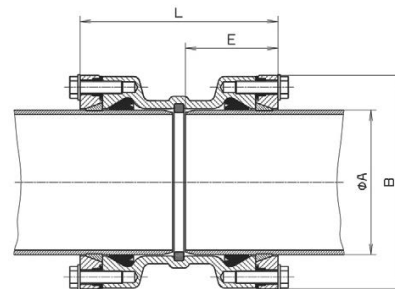


FIG. 2

## System 2000 Flange Adaptor

Socket/Flange adaptor for PE and PVC pipe

### Features

- Using a lip seal ring for sealing the pipe allows for easier insertion of the pipe into the System 2000 socket
- The pipe restraining system is required for pushing the pipe into the seal and chamfer with an appropriate tool
- For PE pipes with thin walls ( $\geq$  SDR 21) and low internal pressure we recommend using a support liner
- Suitable for PE pipes 80/100, EN 12201, DIN 8074
- For PVC pipes according to EN ISO 1452-2
- Flange sized according AS / NZS 4087 fig. b5'

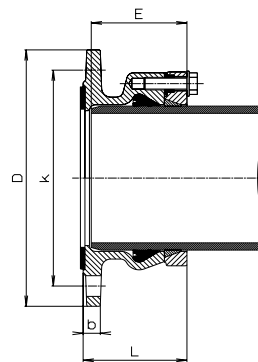


FIG. 3

## System 2000 End Caps

End caps for PE and PVC pipe

### Features

- Using a lip seal ring for sealing the pipe allows for easier insertion of the pipe into the System 2000 socket
- The pipe restraining system is required for pushing the pipe into the seal and chamfer with an appropriate tool
- For PE pipes with thin walls ( $\geq$  SDR 21) and low internal pressure we recommend using a support liner
- Suitable for PE pipes 80/100, EN 12201, DIN 8074
- For PVC pipes according to EN ISO 1452-2

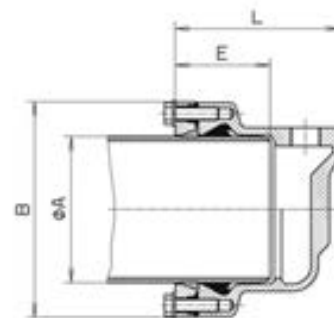


FIG. 4

**TABLE 1 System 2000 Flange Adaptors**

Item Code	Flange DN	Pipe Ø (mm)	D	k	b	E	Bolts		Length (mm)	Weight (kg)
							Qty	Thread		
FAS2090-C	80	90	200	146	19	85	4	10 x 40	95	5.5
FAS2125-C	100	125	220	178	19	87	4	12 x 40	97	7
FAS2180-C	150	180	285	235	19	115	4	14 x 55	125	11.6
FAS2225-C	200	225	340	292	20	128	6	16 x 60	138	16
FAS2250-C	200	250	340	292	20	145	12	16 x 65	225	27
FAS2315-C	300	315	455	406	25	174	12	20 x 80	184	44
FAS2355-C	300	355	455	406	25	237	12	20 x 80	277	61
FAS2400-C	400	400	565	521	25	230	16	20 x 80	242	97
FAS2500-C	500	500	715	641	32	346	16	24 x 120	365	144
FAS2560-C	500	560	715	641	32	372	20	24 x 120	450	167
FAS2630-C	600	630	760	756	36	399	20	24 x 130	459	260

**TABLE 2 System 2000 Couplers**

Item Code	Pipe Ø (mm)	E	B	Length (mm)	Weight (kg)
CS2063-C	63	80	124	171	3.6
CS2090-C	90	85	152	181	4.3
CS2110-C	110	85	172	181	6.5
CS2125-C	125	87	193	185	8.2
CS2140-C	140	93	210	197	9
CS2160-C	160	105	236	221	11.8
CS2180-C	180	113	258	241	19
CS2200-C	200	125	284	261	24
CS2225-C	225	128	314	265	28
CS2250-C	250	145	347	300	34
CS2280-C	280	148	376	306	40.5
CS2315-C	315	174	422	358	62.5
CS2355-C	355	237	472	464	98

**TABLE 3 System 2000 End Caps**

Item Code	Pipe Ø (mm)	E	B	Length (mm)	Weight (kg)
GBCS2090-C	90	85	152	141	4.6
GBCS2125T-C*	125	87	193	162	6.1
GBCS2160-C	160	105	236	180	8.6
GBCS2180T-C*	180	113	258	192	11.7
GBCS2250T-C*	250	145	347	225	20.5

\* Axial thread outlet to 1"

Branches Nationwide Support Office & Technical Services 0800 93 7473

**Disclaimer:** While every effort has been made to ensure that the information in this document is correct and accurate, users of Hynds product or information within this document must make their own assessment of suitability for their particular application. Product dimensions are nominal only, and should be verified if critical to a particular installation. No warranty is either expressed, implied, or statutory made by Hynds unless expressly stated in any sale and purchase agreement entered into between Hynds and the user.